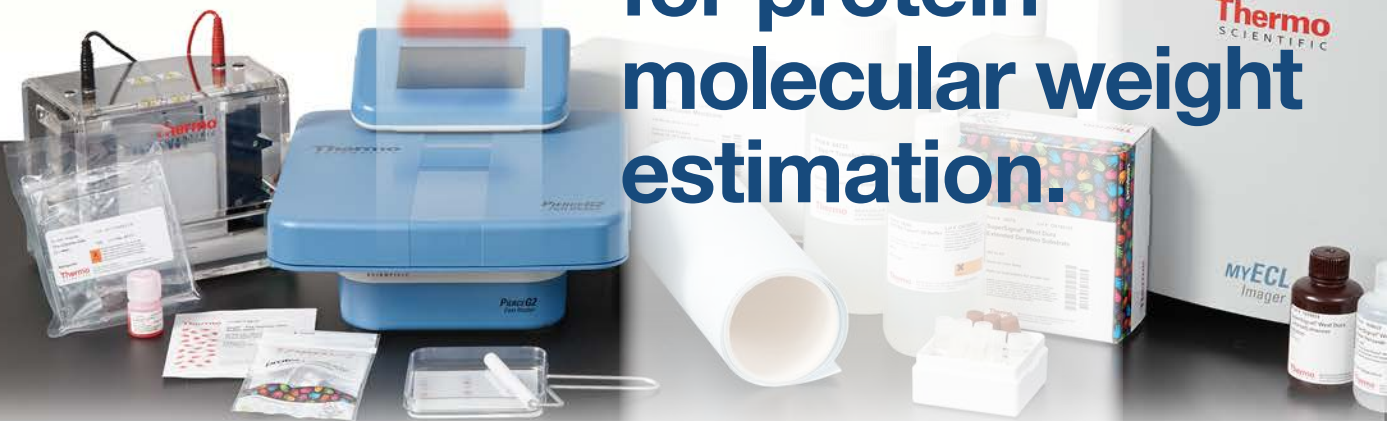


Thermo Scientific
**protein
ladders
give you**

more

**choices
for protein
molecular weight
estimation.**



Thermo Scientific™ Pierce™
Prestained and Unstained
Protein Ladders for easy, reliable
protein molecular weight estimation.

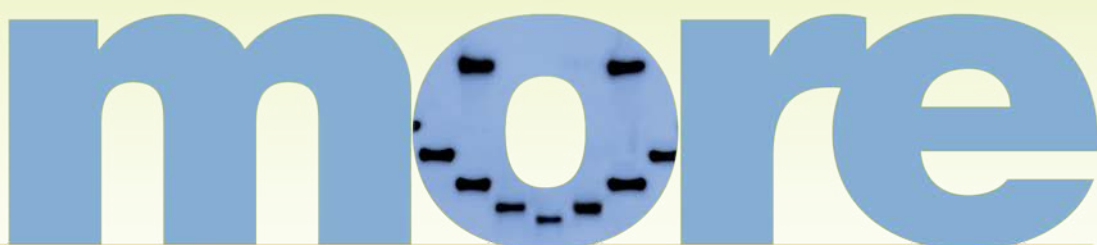


Prestained or unstained, including specialty protein ladders.

Choose what's best for your application.

Our ready-to-use mixes of recombinant proteins facilitate easy protein analysis during gel electrophoresis and Western blotting. The Prestained Protein Ladders are recommended for approximate determination of molecular weight, monitoring the progress of the electrophoresis run and the efficiency of the protein transfer to the membrane during Western blotting procedures. For precise determination of molecular weights of target proteins in any buffer system, we recommend using our Unstained Protein Ladders.

more



Highlights:

- **Best value** – high quality without the high price
- **Performance** – sharp protein band resolution and consistent migration patterns provide easy molecular weight determination
- **Convenient** – protein ladders are ready to load with no heating or boiling required
- **Reliable** – exceptional lot-to-lot consistency and reproducibility

choices for protein molecular weight estimation.

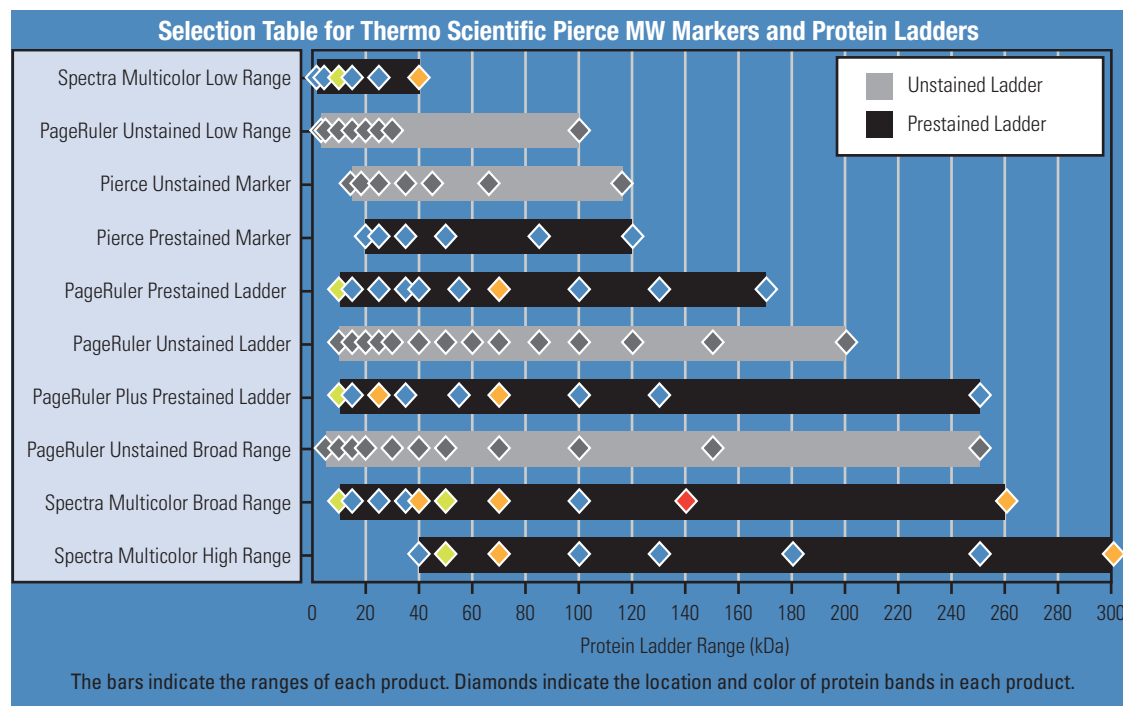


Thermo Scientific™ Pierce™
Prestained and Unstained
Protein Ladders for easy, reliable
protein molecular weight estimation.

Ordering Information

Product #	Description	Pkg. Size
PI26610	Pierce Unstained Protein MW Marker	2 x 1mL
PI26612	Pierce Prestained Protein MW Marker	500µL
PI26614	PageRuler Unstained Protein Ladder	2 x 250µL
PI26616	PageRuler Prestained Protein Ladder	2 x 250µL
PI26617	PageRuler Prestained Protein Ladder	10 x 250µL
PI26619	PageRuler Plus Prestained Protein Ladder	2 x 250µL
PI26620	PageRuler Plus Prestained Protein Ladder	10 x 250µL
PI26634	Spectra Multicolor Broad Range Protein Ladder	2 x 250µL
PI26623	Spectra Multicolor Broad Range Protein Ladder	10 x 250µL
PI26625	Spectra Multicolor High Range Protein Ladder	2 x 250µL
PI26628	Spectra Multicolor Low Range Protein Ladder	250µL
PI26630	PageRuler Unstained Broad Range Protein Ladder	2 x 250µL
PI26632	PageRuler Unstained Low Range Protein Ladder	2 x 250µL
PI84785	SuperSignal Molecular Weight Protein Ladder	250µL
PI84786	SuperSignal Enhanced Molecular Weight Protein Ladder	250µL
PI26635	PageRuler Prestained NIR Protein Ladder	2 x 250µL

thermoscientific.com/pierce

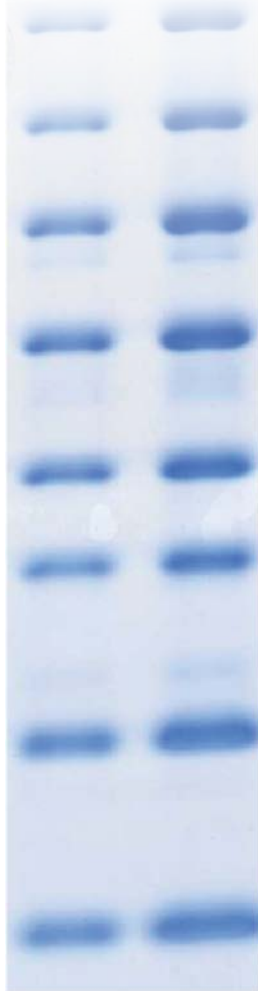


Choosing the right protein ladder. Use this table as a quick reference guide to select the right protein ladder for your application.

Thermo Scientific Pierce Protein Ladders					Application								
	Product Name	Product #	# Proteins	MW range	Reference bands	SDS PAGE					Western Blotting		
						Protein MW determination	Protein band visualization	Monitoring electrophoresis run	Coomassie/silver/fluorescent staining	NIR detection	Monitoring protein transfer	Chemiluminescent band visualization	
Colorimetric	Unstained	PageRuler Unstained Broad Range Protein Ladder	PI26630	11	5-250kDa	20, 50 and 100kDa	Best	—	—	Best	—	—	Good†
		PageRuler Unstained Protein Ladder	PI26614	14	10-200kDa	50kDa	Good	—	—	Good	—	—	Good†
		PageRuler Unstained Low Range Protein Ladder	PI26632	8	3.4-100kDa	25kDa	Best	—	—	Best	—	—	Good†
		PageRuler Unstained High Range Protein Ladder	PI26637	8	60-250kDa	150kDa	Best	—	—	Best	—	—	Good†
		Pierce Unstained Protein Molecular Weight Marker	PI26610	7	14.4-116kDa	—	Good	—	—	Good	—	—	—
	Prestained	PageRuler Prestained Protein Ladder	PI26616, PI26617	10	10-170kDa	Green 10kDa; Orange 70kDa	Good	Good	Good	—	Good†	Good	—
		PageRuler Plus Prestained Protein Ladder	PI26619, PI26620	9	10-250kDa	Green 10kDa; Orange 25 and 70kDa	Good	Good	Good	—	Good†	Good	—
		Spectra Multicolor Broad Range Protein Ladder	PI26634, PI26623	10	10-260kDa	Green 10 and 50kDa; Orange 40, 70 and 260kDa; Pink 140kDa	Good	Best	Best	—	Good†	Best	—
		Spectra Multicolor Low Range Protein Ladder	PI26628	6	1.7-40kDa	Green 10kDa; Orange 40kDa	Good	Best	Best	—	Good†	Best	—
		Spectra Multicolor High Range Protein Ladder	PI26625	8	40-300kDa	Green 50kDa; Orange 70 and 300kDa	Good	Best	Best	—	Good†	Best	—
	Pierce Prestained Protein Molecular Weight Marker	PI26612	6	20-120kDa	—	Good	Good	Good	—	Good	Good	—	
Chemi. Lum.	SuperSignal Molecular Weight Protein Ladder	PI84785, PI84786	8	20-150kDa	—	Good	—	—	Good	—	Good	Best	
NIR	PageRuler Prestained NIR Protein Ladder	PI26635	10	11-250kDa	55kDa	Good	Good	Good	—	Best	Good	—	

† with Strep-Tactin™ HRP or AP Conjugates

‡ Blue and green prestained bands fluoresce in NIR region



Migration Patterns of PageRuler Prestained Protein Ladder

Thermo Scientific PageRuler Prestained Protein Ladder															
Gel type	Tris-Glycine							Tris-Acetate ^{††}		Bis-Tris ^{††}					
Gel concentration	4-20%	8-16%	10-20%	8%	10%	12%	15%	3-8%	7%	4-12%	10%		12%		
Running buffer	Tris-Glycine							Tris-Acetate		MOPS	MES	MOPS	MES	MOPS	MES
Apparent Molecular Sizes (kDa)															
% length of gel	10							170	130	150					
	20	170	130	170				170	130						
	30	100	100	70	100	70	55	100	70	120	140	115	140		
	40	70	70	55	70	55	40	150	85	80	80	65	65		
	50	55	55	40	55	40	35	120	85	65	50	50	40		
	60	40	40	25	55	35	25	85	25	50	40	40	30		
	70	25	35		40	25	15	15	65	50	30	25	30		
	80	15	25	15	35		15	15	50	40	25	15	25		
	90	10	15	15	25	15	10	10	40	30	15	15	15		
	100		10	10	15	10	10	10	25	25	10	10	15		

Migration Patterns of PageRuler Plus Prestained Protein Ladder

Thermo Scientific PageRuler Plus Prestained Protein Ladder															
Gel type	Tris-Glycine							Tris-Acetate ^{††}		Bis-Tris ^{††}					
Gel concentration	4-20%	8-16%	10-20%	8%	10%	12%	15%	3-8%	7%	4-12%	10%		12%		
Running buffer	Tris-Glycine							Tris-Acetate		MOPS	MES	MOPS	MES	MOPS	MES
Apparent Molecular Sizes (kDa)															
% length of gel	10							250	130						
	20	250	250	130	250	130	100	100	70	205	185	190	185		
	30	100	100	70	100	70	55	100	70	120	115	80	80		
	40	70	70	55	70	55	35	120	85	85	80	70	65		
	50	55	55	35	55	35	25	85	65	50	50	50	50		
	60	35	55		55	35	25	25	85	65	50	30	30		
	70	25	35	25	35	25	15	15	65	50	30	25	30		
	80	15	25	15	25	15	10	10	50	30	25	15	15		
	90	10	15	10	15	10	10	10	30	30	15	10	10		
	100		10	10	15	10	10	10	25	25	10	10	15		

Migration Patterns of Spectra Multicolor Broad Range Protein Ladder

Thermo Scientific Spectra Multicolor Broad Range Protein Ladder															
Gel type	Tris-Glycine							Tris-Acetate ^{††}		Bis-Tris ^{††}					
Gel concentration	4-20%	8-16%	10-20%	8%	10%	12%	15%	3-8%	7%	4-12%	10%		12%		
Running buffer	Tris-Glycine							Tris-Acetate		MOPS	MES	MOPS	MES	MOPS	MES
Apparent Molecular Sizes (kDa)															
% length of gel	10							260	140						
	20	260	260	140	260	140	100	100	70	225	225	235	225		
	30	100	100	70	100	70	50	100	70	120	115	120	115		
	40	70	70	50	70	50	40	120	85	85	80	70	65		
	50	50	50	40	50	40	25	85	65	50	50	50	50		
	60	40	50		50	35	25	25	65	50	40	35	30		
	70	25	35	25	35	25	15	15	50	30	30	25	25		
	80	15	25	15	35		10	10	40	25	25	15	15		
	90	10	15	10	25	10	10	10	30	30	15	10	10		
	100		10	10	15	10	10	10	25	25	10	10	15		

thermoscientific.com/pierce

Migration Patterns of Spectra Multicolor High Range and Low Range Protein Ladder

Thermo Scientific Spectra Multicolor High Range Protein Ladder										
Gel type	Tris-Glycine					Tris-Acetate ^{††}	Bis-Tris ^{††}			
Gel concentration	4-12%	4%	6%	8%	10%	4-20%	3-8%	7%	4-12%	
Running buffer	Tris-Glycine					Tris-Acetate	MOPS			
Apparent Molecular Sizes (kDa)										
% length of gel	10	300	250	250	300	270	270	270	185	
	20	250	180	180	250	205	150	140	115	
	30	180	130	100	180	130	120	80	80	
	40	130	100	70	130	100	85	65	65	
	50	100	250	70	100	70	65	50	50	
	60	70	180	50	70	50	50	40	40	
	70	50	130	40	50	40	40	40	40	
	80	40	130		40	40	40	40	40	
	90		100		40	40	40	40	40	
	100		100		40	40	40	40	40	

Thermo Scientific Spectra Multicolor Low Range Protein Ladder											
Gel type	Tris-Tricine										
Gel concentration	4-20%	10-20%	14%	16%	18%	14-SP %	16-SP %	18-SP %	10-20% ^{††}	16% ^{††}	10-20% ^{†††}
Running buffer	Tris-Tricine SDS										
Apparent Molecular Weights (kDa)											
% length of gel	10						40				
	20						40	40			
	30						25	25	25		
	40						15	15	15	15	
	50						10	10	10	10	
	60						5	5	5	5	
	70						5	5	5	5	
	80						2	2	2	2	
	90						2	2	2	2	
	100						2	2	2	2	

Note: The apparent molecular size of each protein (kDa) has been determined by calibration against an unstained protein ladder in each electrophoresis condition.

†† – Migration patterns were determined using respective NuPAGE™ precast gels.

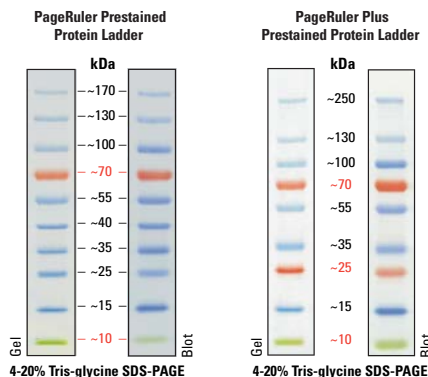
SP – small peptide SDS-polyacrylamide gel with higher degree of crosslinking (c=5% instead of usual ~3%).

††† – migration patterns were determined using respective Ready Gel™ precast gel.

†††† – migration patterns were determined using respective Ready Gel™ precast gel.

Thermo Scientific PageRuler Prestained Protein Ladders

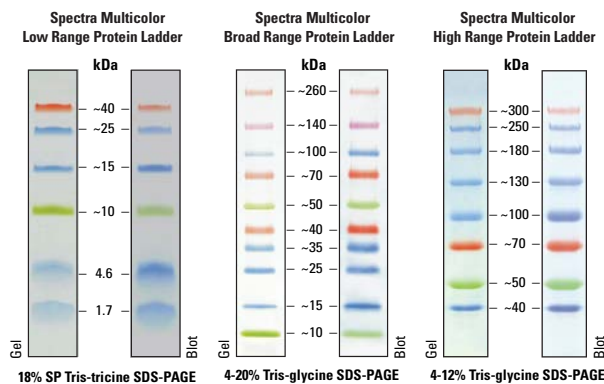
The Thermo Scientific™ PageRuler™ and PageRuler Plus Prestained Protein Ladders are comprised of highly purified recombinant proteins bound to three different chromophores for easy protein molecular weight determination. The green and orange reference bands in the PageRuler products provide easy orientation of the protein bands.



Product #'s PI26616, PI26617 Product #'s PI26619, PI26620

Thermo Scientific Spectra Multicolor Protein Ladders

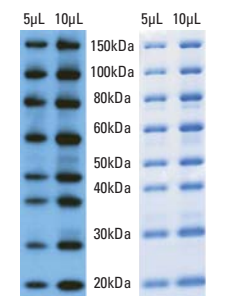
Four different chromophores bound to proteins in Thermo Scientific™ Spectra™ Multicolor Broad Range Protein Ladders produce a brightly colored ladder with an easy-to-remember pattern. The Spectra Multicolor High Range and Low Range Protein Ladders are designed for large and small protein analysis, respectively.



Product # PI26628 Product #'s PI26623, PI26634 Product # PI26625

Thermo Scientific SuperSignal Molecular Weight Protein Ladders

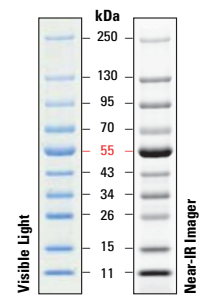
The Thermo Scientific™ SuperSignal™ Molecular Weight Protein Ladders contain a ready-to-use stabilized mixture of eight recombinant proteins ranging in size from 20 to 150kDa. These recombinant proteins bind antibodies used in the Western blot through an IgG binding site. The protein markers can then be visualized either using appropriate substrates for enzyme-labeled antibodies or via fluorescent dye-labeled antibodies. Use the SuperSignal Enhanced Molecular Weight Protein Ladders with mouse monoclonals.



Product #'s PI84785, PI84786

Thermo Scientific PageRuler Prestained NIR Ladder

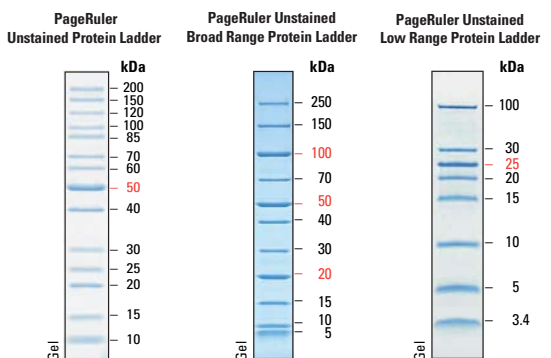
The Thermo Scientific™ PageRuler™ Prestained NIR Protein Ladder is a mixture of 10 proteins (11 to 250kDa) that are blue-stained and fluorescently labeled for near-IR fluorescence visualization and protein sizing. The protein MW markers in this ladder resolve into sharp bands when analyzed by SDS-PAGE and are labeled with a fluorescent dye for visualization with instruments equipped with near-infrared (NIR) fluorescence detection. The bands are also directly visible because the proteins are prestained blue.



Product # PI26635

Thermo Scientific PageRuler Unstained Protein Ladders

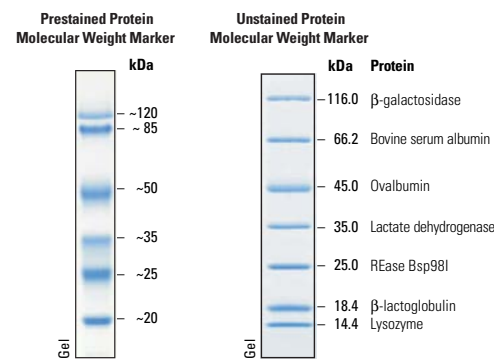
Thermo Scientific™ PageRuler™ Unstained Protein Ladders are mixtures of recombinant, highly purified proteins designed for accurate sizing of proteins by SDS-PAGE. The ladders resolve into clearly identifiable sharp bands when analyzed by SDS-PAGE and stained with Coomassie Blue or silver stain. Each ladder contains protein bands of greater intensity which serve as reference bands. Proteins can be detected on Western blots by staining with Ponceau S, Coomassie Blue, (except for 3.4kDa and 5kDa polypeptides) or by using Strep-Tactin™ conjugates.



Product # PI26614 Product # PI26630 Product # PI26632

Thermo Scientific Pierce Protein Molecular Weight Marker

Thermo Scientific™ Pierce™ Prestained Protein Molecular Weight Markers are designed to monitor protein migration during SDS-polyacrylamide gel electrophoreses and monitor protein transfer onto membranes. Pierce Unstained Protein Weight Markers produce sharp bands on SDS-polyacrylamide gel following staining with Coomassie-based or silver stains and are recommended for accurate sizing of proteins on SDS PAGE and Western blots.



Product # PI26612 Product # PI26610

thermoscientific.com/pierce

© 2014 Thermo Fisher Scientific Inc. All rights reserved. These products are supplied for laboratory or manufacturing applications only. Ready Gel is a registered trademark of Bio-Rad Laboratories, Inc. Strep-Tactin is a registered trademark of IBA GmbH. All other trademarks are the property of Thermo Fisher Scientific Inc. and its subsidiaries.



In the United States:

For customer service, call 1-800-766-7000
To fax an order, use 1-800-926-1166
To order online: www.fishersci.com

In Canada:

For customer service, call 1-800-234-7437
To fax an order, use 1-800-463-2996
To order online: www.fishersci.ca

Thermo
SCIENTIFIC

A Thermo Fisher Scientific Brand